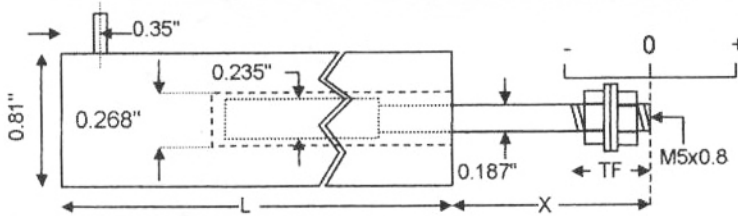


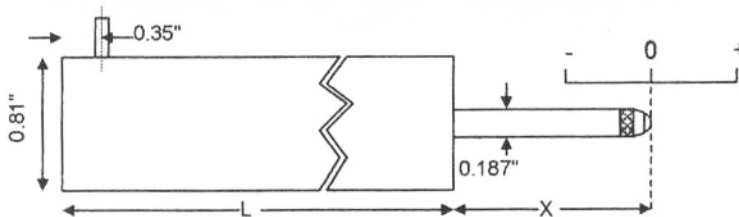
Unguided version.



On our unguided LVDTs the armature assembly is a separate component, to make a measurement the user must guide the armature inside the body without touching the sides. Unguided position measurement transducers are appropriate where external guidance is available and give truly non-contact operation

Type	Range	Linearity error (% F.S.)	L	X	Total weight	Armature weight	TF	Inward over-travel	Sensitivity (nom)
ACT500	±12.5mm (±0.5")	<±0.5/±0.25/±0.1	5.0"	1.7"	6oz	0.6oz	0.6"	0.6"	0.7V/V
ACT1000	±25mm (±1")	<±0.5/±0.25/±0.1	6.1"	2.7"	8oz	0.8oz	0.6"	0.9"	0.9V/V
ACT2000	±50mm (±2")	<±0.5/±0.25/±0.1	10.6"	3.2"	11oz	1.3oz	0.6"	0.6"	1.5V/V
ACT3000	±75mm (±3")	<±0.5/±0.25/±0.1	15.0"	4.7"	1.0lb	1.9oz	0.6"	1.1"	1.5V/V
ACT4000	±100mm (±4")	<±0.5/±0.25/±0.1	16.8"	5.2"	1.3lb	2.5oz	0.6"	0.6"	3.2V/V
ACT6000	±150mm (±6")	<±0.5/±0.25	24.3"	7.2"	1.8lb	3.5oz	0.6"	0.6"	2.5V/V
ACT8000	±200mm (±8")	<±0.5/±0.25	31.8"	10.2"	2.6lb	4.9oz	1.1"	1.1"	1.5V/V

Spring return version.



Our spring displacement transducer has bearings to guide the armature inside the measurement sensor and a spring which pushes the armature to the fully out position. Spring return LVDTs are appropriate where it is not possible to connect the transducer armature to the moving component being measured.

Type	Range	Linearity error (% F.S.)	L	X	Total weight	Spring force at X	Spring rate	Inward over-travel	Outward over-travel	Sensitivity (nom)
ACT500A	±12.5mm (±0.5")	<±0.5/±0.25/±0.1	5.3"	1.5"	6oz	4.7oz	2.0oz/inch	0.04"	0.51"	0.7V/V
ACT1000A	±25mm (±1")	<±0.5/±0.25/±0.1	6.4"	2.5"	8oz	7.2oz	3.0oz/inch	0.1"	0.39"	0.9V/V
ACT2000A	±50mm (±2")	<±0.5/±0.25/±0.1	10.9"	3.0"	14oz	8oz	1.8oz/inch	0.3"	0.55"	1.5V/V
ACT3000A	±75mm (±3")	<±0.5/±0.25/±0.1	15.3"	4.5"	1.1lb	11lb	3.2oz/inch	0.6"	0.59"	1.5V/V

Specification	
Excitation/supply (acceptable)	0.5V to 7V rms, 2kHz to 10kHz (sinusoidal)
Excitation/supply (calibrated)	5V rms, 5kHz (sinusoidal)
Output load	100k Ohms
Temperature coefficient (zero)	±0.006% F.S. /°F (typical)
Temperature coefficient (span)	±0.006% F.S. /°F (typical)
Operating temperature range	-58°F to 257°F
Electrical termination	6.6ft (integral cable) Longer available to order.

All dimensions and specifications are nominal.

Due to our policy of on-going development, specifications may change without notice. Any modification may affect some or all of the specifications for our equipment.