

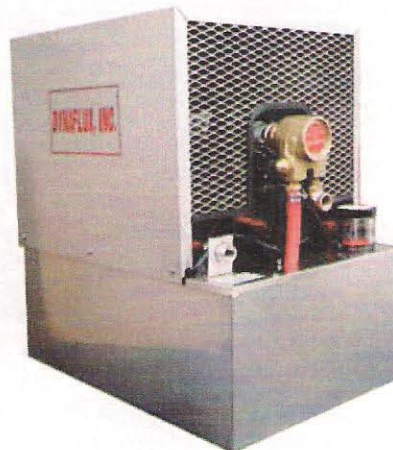
R2200V COOLING SYSTEM

SPECIFICATIONS:

- Factory set at 50 psi adjustable to 100 psi
- 15 gallon reservoir (6 gallon available)
- 115 or 230vac / single phase-60 hz
- 8.2 / 4.1 amp : 60 Hz
- 30,000 BTU
- Dimensions: 23"L x 16"W x 25.5"H
- 1/2" FPT fittings
- 8 foot power cord
- Visible water level and water flow sight glass
- Thermal overload
- Net weight: 70 lbs / 32 kg

R2200V Rotary VANE Pump
4.0 gpm at 50 psi

*Tech Sheet & Parts List / Diagram
(as shown) included with unit.*



The **R2200V Cooling System** is designed for:
Equipment UP TO

| | |
|------------------------|-----------|
| MIG guns | 1000 amps |
| TIG torches | 1000 amps |
| PLASMA Welders/Cutters | 300 amps |
| RESISTANCE Welders: | 150 KVA |
| INDUCTION Welding : | 10KW |

30,000 BTU/HR @ 75 Degrees Differential
between ambient and return water temperature.

- Stainless steel construction eliminates coolant contamination due to electrolysis or chemical reactions.
- All units are plumbed with copper tubing and reinforced hose.
- New extended life pump.
- Air flows into patented high efficiency radiator first for maximum efficiency.
- No external plumbing is required because of closed loop water system.
- A water level float gauge and filler cap are combined in a single unit multi-purpose sight glass which enables operator to observe return water at a distance.
- Water filter on pump inlet protects pump and extends pump life.

15 Month Limited Warranty

Defense Anti-Freeze and Pump Lubricant (DF929 / DF927 Ready to Use) provides year round protection for DYNAFLUX water coolers and other closed loop water recirculators.

NOTE: Use of automotive anti-freeze compounds voids warranty and shortens pump life.